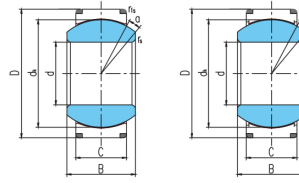
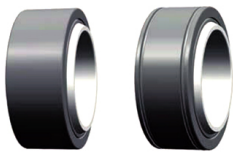


GEC...XT ,XT-2RS(d 320~460)



GEC(H)···XT

GEC(H)···XT-2RS

select	Inquiry	Bearing No.	Dimensions(mm)								Basic Load Rating(kN)		Weight kg
			d	D	B	C	d <sub>k</sub>	r <sub>s</sub> min	r <sub>1s</sub> min	a°	Cr	Cor	
GEC320XT	GEC320XT-2RS	320	440	160	135	380	1.1	3	4	9230	18460	78	
GEC340XT	GEC340XT-2RS	340	460	160	135	400	1.1	3	3	9720	19440	83	
GEC360XT	GEC360XT-2RS	360	480	160	135	420	1.1	3	3	10200	20400	87	
GEC380XT	GEC380XT-2RS	380	520	190	160	450	1.5	4	4	12960	25920	129	
GEC400XT	GEC400XT-2RS	400	540	190	160	470	1.5	4	3	13530	27060	135	
GEC420XT	GEC420XT-2RS	420	560	190	160	490	1.5	4	3	14110	28220	141	
GEC440XT	GEC440XT-2RS	440	600	218	185	520	1.5	4	3	17310	34620	196	
GEC460XT	GEC460XT-2RS	460	620	218	185	540	1.5	4	3	17980	35960	204	