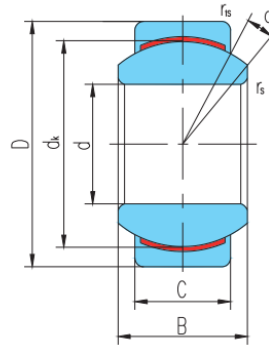


GEG...C(d 4□45)



select	Inquiry	Bearing No.	Dimensions(mm)								Basic Load Rating(kN)		Weight kg
			d	D	B	C	d <sub>k</sub>	r <sub>s</sub> min	r <sub>1s</sub> min	a°	Cr	Cor	
GEG4C	4	14	7	4	10	0.3	0.3	20	3.6	9.1	0.005		
GEG5C	5	16	9	5	13	0.3	0.3	21	5.8	14	0.008		
GEG6C	6	16	9	5	13	0.3	0.3	21	5.8	14	0.006		
GEG8C	8	19	11	6	16	0.3	0.3	21	8.6	21	0.014		
GEG10C	10	22	12	7	18	0.3	3	18	11	28	0.021		
GEG12C	12	26	15	9	22	0.3	0.3	18	18	45	0.033		
GEG15C	15	30	16	10	25	0.3	3	16	22	56	0.049		
GEG17C	17	35	20	12	29	0.3	0.3	19	31	78	0.083		
GEG20C	20	42	25	16	35.5	3	0.3	17	51	127	0.153		
GEG25C	25	47	28	18	40.7	0.6	0.6	17	65	166	0.203		
GEG30C	30	55	32	20	47	0.6	0.6	17	84	211	0.304		
GEG35C	35	62	35	22	53	0.6	1	16	104	262	0.408		
GEG40C	40	68	40	25	60	0.6	1	17	135	337	0.542		
GEG45C	45	75	43	28	66	0.6	1	15	166	415	0.713		